

# Rethinking sustainable and just mobility from below

An investigation of everyday mobility practices and spaces for participation in Brazil



**Aline M. Fernandes Barata**  
PhD Candidate

Supervisors  
Dr Tim Jones  
Prof Sue Brownill

# Research Questions

1. What is the role of participation in promoting sustainable and just mobility?

***Spaces for participation*** can be understood as: “opportunities, moments and channels where citizens can act to potentially affect policies, discourses, decisions and relationships which affect their lives and interests” (Gaventa, 2005, p.11).

*Invited and claimed/invented spaces; participation in decision-making/participation in city-making (Cornwall, 2002; Miraftab, 2009; Frediani and Cociña, 2019).*



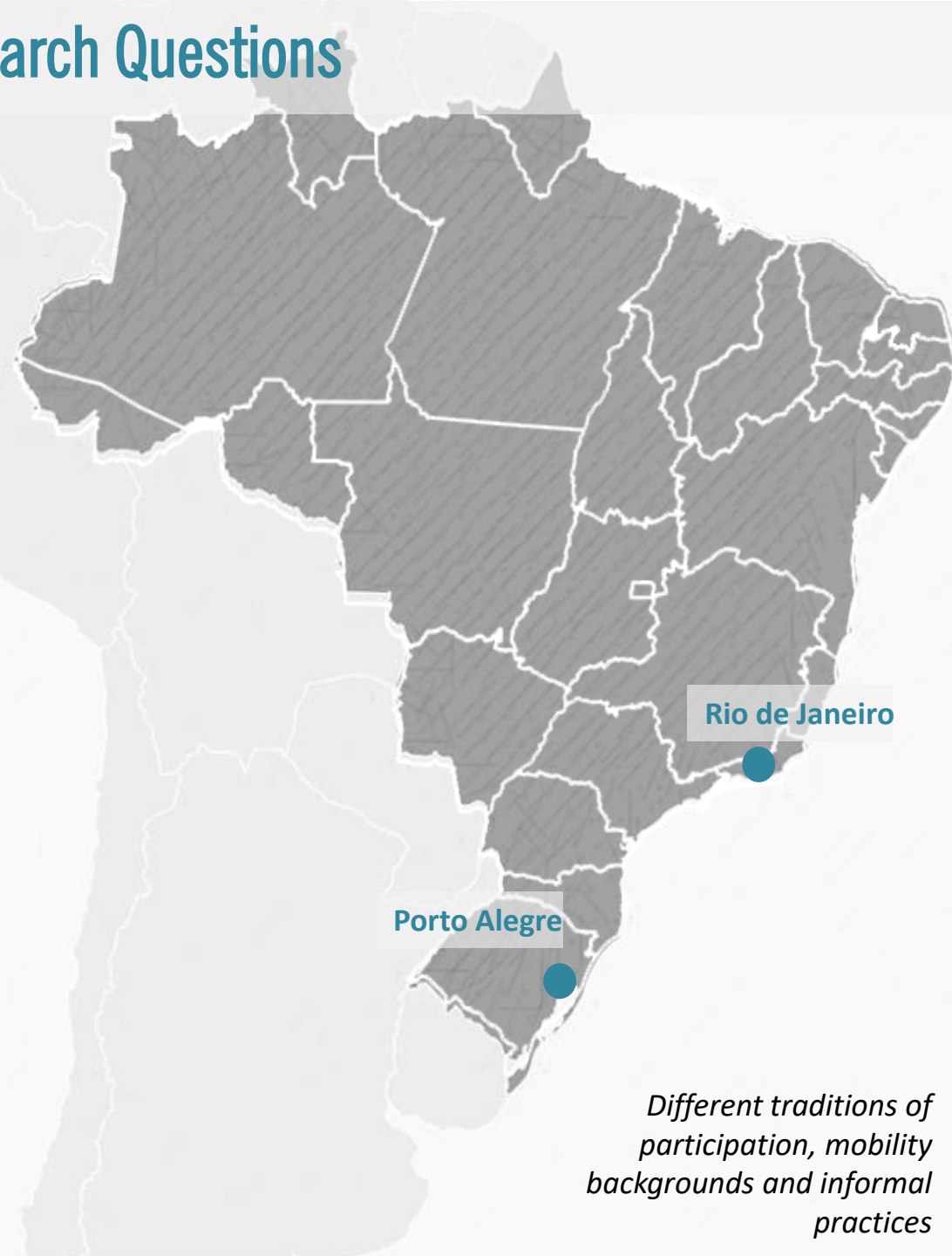
# Research Questions

1. What is the role of participation in promoting sustainable and just mobility?
2. What do participation and sustainable and just mobility mean to a constellation of social actors shaping, contesting, reframing and/or suffering from mobility planning?

*Mobilities from above and from below  
(Jensen, 2013)*

Policies, Mobility Plans, Small-scale interventions and transport projects in low-income communities

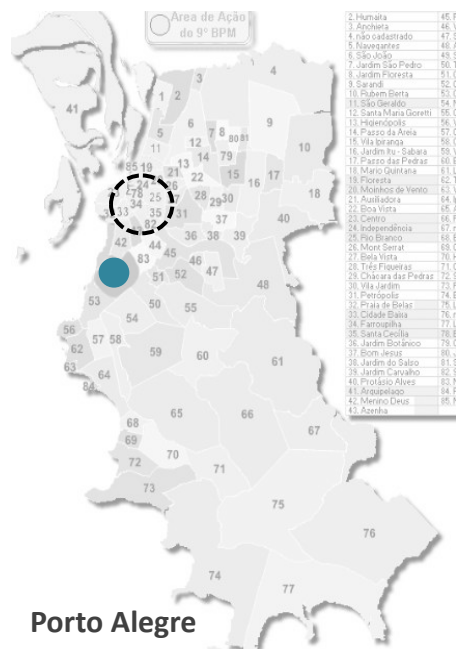
Face-to-face and online interviews with city officials, representatives of NGOs, academics and residents of low-income neighbourhoods



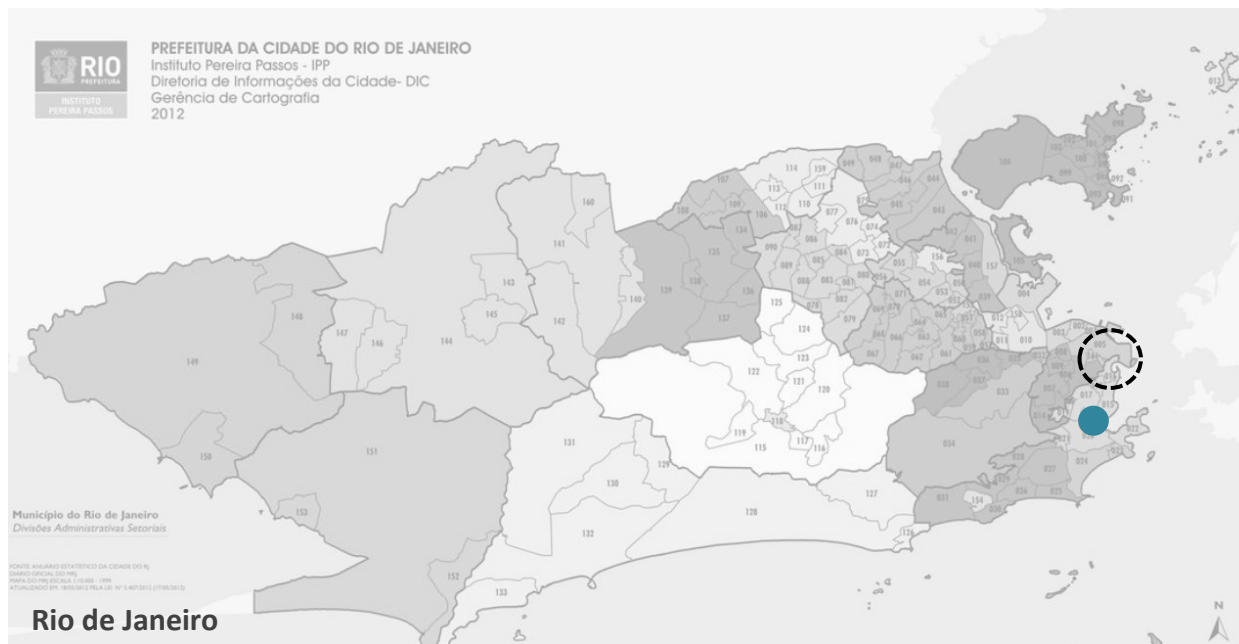
Rio de Janeiro

Porto Alegre

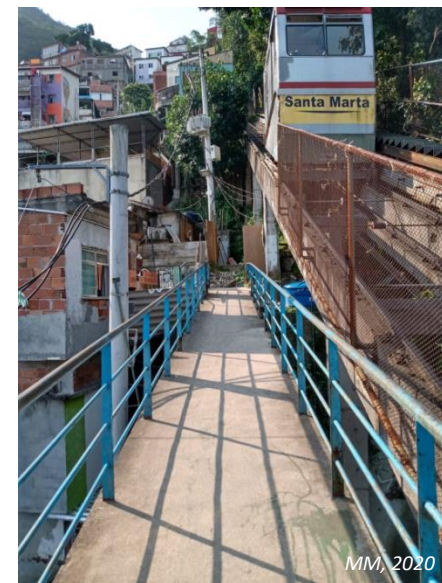
*Different traditions of participation, mobility backgrounds and informal practices*



Vila Tronco



Morro Santa Marta



Photos taken by the participants





# Thank you

Aline M. Fernandes Barata  
*[alinemfbarata@gmail.com](mailto:alinemfbarata@gmail.com)*